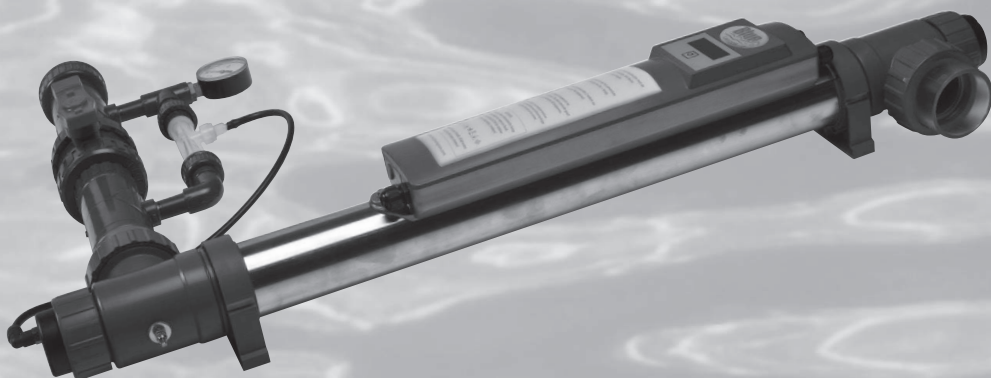




AOP COMPACT OZONE
& UV-C 75W

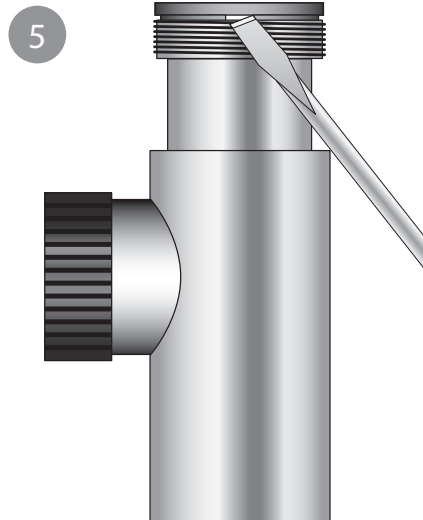
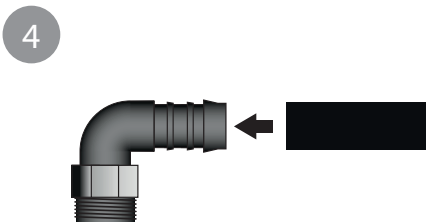
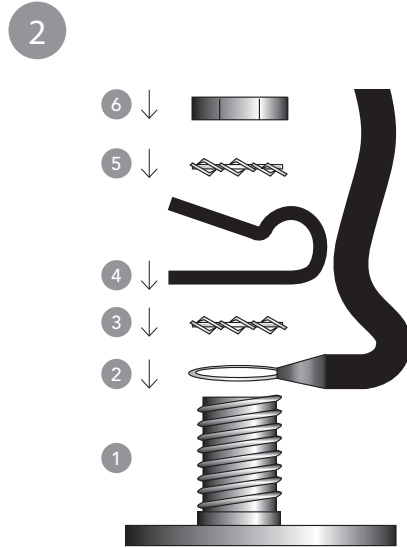
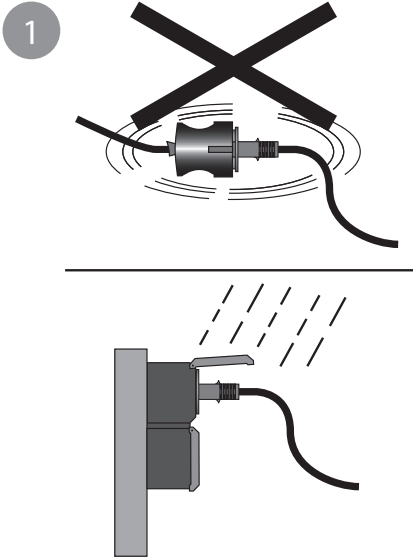
AOP COMPACT OZONE
& UV-C 75W SALTWATER



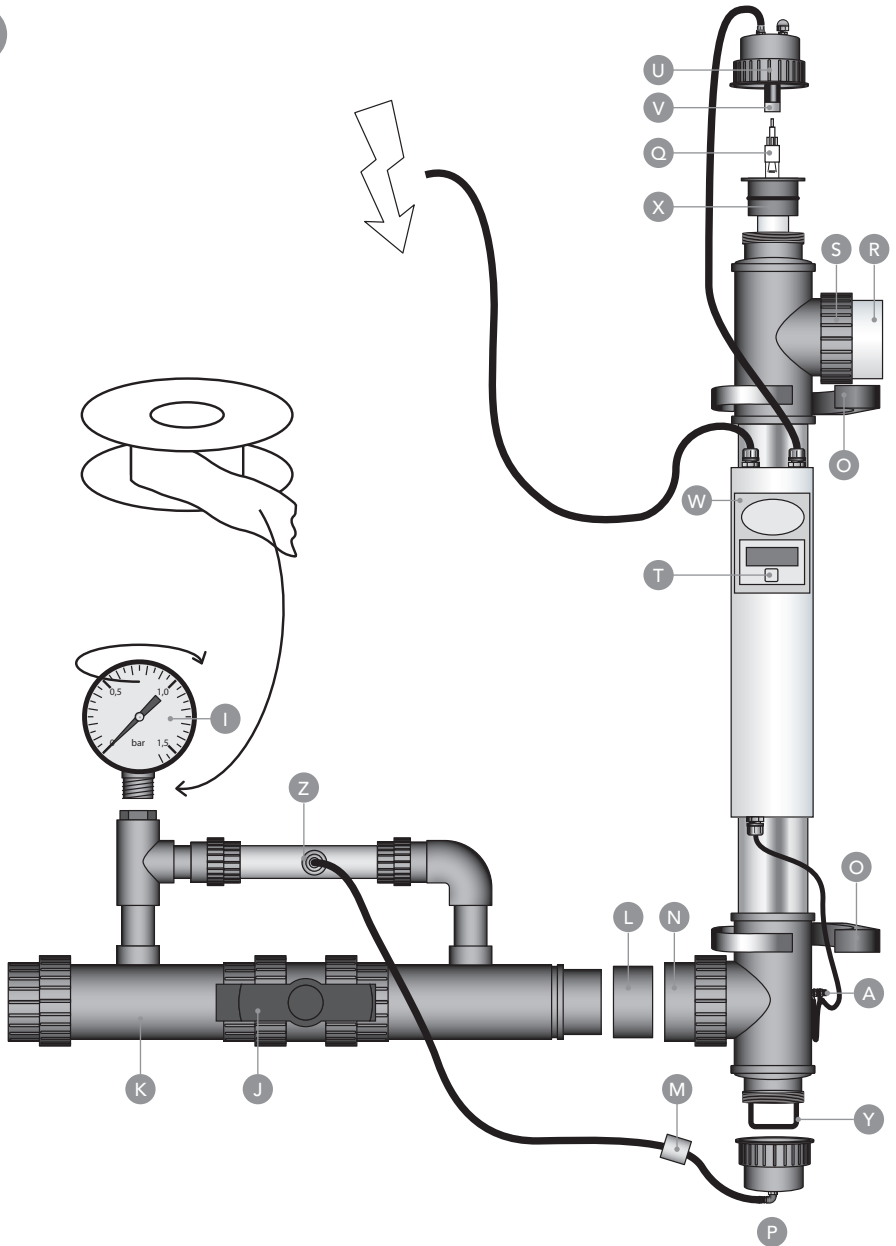


MANUAL
AOP COMPACT OZONE & UV-C 75W
AOP COMPACT OZONE & UV-C 75W SALTWATER

AOP Compact Ozone & UV-C 75W EN 6 - 9



3





Important read this manual carefully before proceeding to installation and commissioning.

EN

INSTALLATION OF THE EARTH (DRAWING 2)

1. Pull the cable (2) through the strain relief (4) before fitting the synthetic strain relief (4) onto the earth bolt (1). Position the strain relief (4) at approximately 10 cm from the eye (2) of the earth cable.
2. Place the eye (2) of the cable onto the earth bolt that is fitted to the housing.
3. Then place a toothed lock washer (3).
4. Fit the strain relief (4), creating a loop of \varnothing 5 cm.
5. Finally place the second toothed lock washer (5) and the lock nut (6) onto the earth bolt.
6. Once the parts have been placed onto the earth bolt in the correct sequence, they can be tightened with a spanner or a ring spanner number 8.

INSTALLATION OF THE DEVICE (SEE DRAWING 3)

Determine where the device will be installed. The AOP Compact Ozone & UV-C 75W must never be installed behind the Ph regulator or the salt electrolysis system in your swimming pool installation. The ideal location to install your device is immediately behind the filter. The installation must always take place outside of the pool. Ensure that there is always water flowing through the unit when the lamp is on. Never install the unit in an area exposed to full sunlight. The installation must always take place in a dry and well-ventilated area. The device must always be fitted in the vertical position, and a space of 30 cm must be available underneath to carry out maintenance. An area of approx. 1.5 m must be available at the top in order to be able to replace the lamp (Q) smoothly without having to dismantle the complete device.

1. Fit the manometer (I) onto the Venturi system using Teflon tape (not included in the delivery). Hand-tighten the manometer.
2. Glue the entire Venturi system (K) onto the inlet (N) of the device using the supplied \varnothing 63-50 mm glued socket (L). The Venturi system must be mounted onto the device in a horizontal position. The glued socket (L) has a screw thread on one side; when gluing the glued socket, ensure that the screw thread is inserted into the inlet (N).
3. Take the hose with the non-return valve (M). Fit the short section of the hose to the bottom side of the device on the hose (P). Place the long section of the hose onto the adapter (Z) of the Venturi system.
4. Then mount the complete device, including the Venturi system, at the desired place between the piping.
5. Fit the unit with the supplied pipe clips (O) in a fixed position and hand-tighten the 3-part couplings (S). Never use a wrench, tongs or other tools to tighten synthetic parts.
6. Activate the pump and check that there is flow and no leakage in the system.
7. Insert the plug of the UV-C device into a wall socket with a safety ground. Check whether the lamp (Q) is operating via the transparent outlet (R) of the unit.
8. The quantity of ozone air in the system can be adjusted using the ball valve (J). The closer the ball valve is positioned, the more ozone air will enter the system. The ideal position on the manometer is between 0.4 and 0.7 bar.

INSTRUCTIONS FOR USE OF THE DIGITAL TIMER

As soon as the UV-C Timer is switched on, the program will carry out a self-test. The display will automatically show the following, one after the other: 8888 - display test ; r and software version number ; 50H or 60H indication of the mains frequency. Following this, the display will show the meter reading.

When the UV-C lamp is switched on for the first time, or after the "reset" function has been used, the value '4500' will appear on the display. A dot next to the digit on the far right of the display will blink every second; this indicates that the counter is running.

The display is automatically set to the factory reading of 4,500 hours. The UV-C lamp operates at 100% radiation for up to 4,500 hours. After 4,500 hours, the radiation will weaken, and may become insufficient to obtain the desired results.

If the UV-C lamp had already been used previously, and is switched on again, the display will indicate the value it had at the time it was switched off earlier. If you have increased or reduced the value of the time meter yourself, the display will indicate the latest counter reading it had before it was switched off.

The settings of the time meter can be modified if you wish. This is carried out as follows:

After holding down the switch (T) underneath the display for 5 seconds, the display will show "rSt", to indicate that the user menu has been selected. Once the switch (T) has been released, the meter indication and "rSt" will blink alternately on the display. It is now possible to step through the menu options by briefly pressing the switch again. 3 setting options are available in the menu: "rSt" "UP" and "dn".

- "rSt" means (reset): This option enables you to reset the meter indication to the factory setting of 4,500 hours. This selection is confirmed if the meter indication and "rSt" on the display blink alternately. If you hold down the switch (T) for 5 seconds, after which the meter indication 4500 will be displayed, and then release it, the timer will start counting down from the 4,500 hour value. This selection is used if, for example, you have replaced the lamp, or if you have modified the meter indication yourself and you want to return it to the factory settings.
- "UP" means (up): This option enables you to increase the meter indication to the desired hour indication. This selection is confirmed if the selected user setting "UP" and the meter indication on the display blink alternately. Following this, press the switch (T) down for 5 seconds. After 5 seconds, the display will only indicate "UP". You can then release the switch. By briefly pressing the switch, the counter value can now be increased in steps of 500 hours from the value of 4,500 up to a maximum value of 9,999. The increased value and "UP" will blink alternately on the display. Wait for 10 seconds after selecting the desired hour indication. After 10 seconds, the selected hour indication will be displayed and the timer will start counting down. If you make a mistake while increasing the meter indication, it is possible to reset the counter to

4500 by holding the switch down for 5 seconds. The counter value will then be reset to 4500, and a new value can be set.

- “dn” means (down): This option enables you to decrease the meter indication to the desired hour indication. This selection is confirmed if the selected user setting “dn” and the meter indication on the display blink alternately. Following this, press the switch (T) down for 5 seconds. After 5 seconds, the display will only indicate “dn”. You can then release the switch.
By briefly pressing the switch, the counter value can now be decreased in steps of 500 hours from the value of 4500 down to a minimum value of 0000. The decreased value and “dn” will blink alternately on the display.
Wait for 10 seconds once you have selected the desired hour indication. After 10 seconds, the selected hour indication will be displayed and the timer will start counting down.
If you make a mistake while decreasing the meter indication, it is possible to reset the counter to 4500 by holding the switch down for 5 seconds. The counter value will then be reset to 4500, and a new value can be set.

The time meter will indicate that the lamp must be replaced as follows:

- From hour position 0672; the display will blink every second. The lamp must be replaced within 4 weeks.
- From hour position 0336; the display will blink every half second; The lamp must be replaced within 2 weeks.
- From hour position 0168; the display will blink every ¼ second; The lamp must be replaced in 1 week’s time.
- At an hour position of 0000; the digits will blink continuously, and the meter will not continue to count down. The lamp must be replaced.

REPLACING THE LAMP

The special AOP Compact Ozone & UV-C 75W lamp must be replaced after 4,500 operating hours. Always switch off the power supply when replacing the lamp.

1. Unscrew the screw cap (U) and pull it up a little, together with the lamp. Carefully remove the lamp from the yellow lamp holder (V). When the lamp is unscrewed, pull it carefully from the quartz glass. As these parts are very fragile, caution is essential. Do not touch the lamp with your hands; use a soft cloth to handle the lamp. If the lamp has been touched, it is recommended to clean it again using a soft cloth and some alcohol.
2. Introduce the new lamp carefully into the quartz glass and fit the lamp into the lamp holder (V). Re-position the lamp and hand-tighten the screw cap (U) onto the unit.

REPLACING THE HOUSING/ELECTRICAL UNIT

If the housing or the electrical unit needs replacing, the earth must first be disconnected from the housing (see Chapter ‘Installation of the earth cable’). The electrical unit of the device is situated in the display box (W) on the device. The display box is glued and cannot be opened. If the electrical unit is replaced, the entire box must be unscrewed and the earth wiring must be disconnected

from the device. Unscrew the screw top (U) and carefully disconnect the lamp holder from the lamp. Any loose parts, i.e. of the earth etc., must be carefully retained, as they are not supplied with a new housing or electrical unit. In case of any doubt with regard to the connection, consult a recognised fitter.

MAINTENANCE/DISMANTLING

Always switch off the power supply during maintenance/dismantling of the device. The special lamp must be replaced after 4,500 operating hours. Always keep the drawings at hand during maintenance/dismantling.

1. Unscrew the three-part couplings and drain the water from the device.
2. Open the pipe clips and carefully pull the device from the supports.
3. Unscrew the screw at the top of the device (U), remove the connection of the lamp from the housing and disconnect the lamp from the yellow lamp holder (V).
4. Then carefully pull the lamp (Q) from the quartz glass (X).
5. If the quartz glass (X) needs replacing, carefully remove it with a large, flat screwdriver (see drawing 5). Never use force!
6. When re-installing the lamp and/or the quartz glass, the housing must be in a vertical position in order to prevent damage to the lamp and the quartz glass.
7. Unscrew the screw cap at the bottom of the device. Re-position the quartz glass onto the device. Ensure that the quartz glass is introduced exactly into the glass holder (Y). Never use force! The quartz glass is very fragile.
8. The pump can be activated after all the parts have been returned to their original position. Please pay attention to the correct position of the sealing rings when re-installing the parts. Check that there is flow and no leakage in the system.
9. Switch the AOP Compact Ozone & UV-C 75W on. Check whether the lamp (Q) is operating via the transparent outlet (R) of the unit.

TECHNICAL SPECIFICATIONS

Lamp	T5 Yellow base Ozone 75W
Max. throughput	23,000 l/h
Max. pressure	2 bar
Max. ozone	0.6 gram
Connection size	Ø 63 mm
Length of the device	100 cm
Width of the device incl. reactor	75 cm

Article number: BH03752 AOP Compact Ozone & UV-C 75W (230V; 50/60Hz)

Article number: BH09752 AOP Compact Ozone & UV-C 75W Saltwater (230V; 50/60Hz) Article

number: F980501 Ozone UV-C replacement lamp 75 watt

For the safety instructions and terms of guarantee we would like to refer to the general UV-C manual from VGE International B.V.