

SPLASHER

AQUA
link



All-in-one

Automatic pool cleaner

Limpiafondos automático

Nettoyeur automatique de piscine

Automatischer Poolreiniger

Pulitore automatico per piscine

Aspirador de piscina automático



CONTENTS



IMPORTANT WARNINGS AND SAFETY INFORMATION 04

 How to safely operate the **SPLASHER**
 Automatic Pool Cleaner..... 04



GENERAL INSTALLATION CHECKS 05

 Pre-Installation Check List 05

 Post-Installation Check List..... 05



OPERATING AND INSTALLATION INSTRUCTIONS 05

 Preparation for installation (Pool preparation)..... 05

 Method for cleaning pools and pumps..... 05

 Assembly of your **SPLASHER** 06

SPLASHER Components and Spare Parts diagram 06

 Hose assembly 07

 Attaching hose weights..... 07

 Installation of your **SPLASHER** 07

 Weir installation 07

SPLASHER fitment and positioning..... 08



MAINTENANCE..... 08

 Diaphragm Assembly 08

 Routine Maintenance..... 09

 Tips..... 09



TROUBLESHOOTING 10



WARRANTY INFORMATION 14

SPLASHER 2 year Manufacturer's Warranty 14

 Warranty exclusions 14

 Warranty Terms and Conditions 14



WARRANTY CARD 15

IMPORTANT NOTICE:










Before installing your cleaner, review and understand all warnings, safety and warranty information in this guide. Failure to follow these instructions or improper installation of the cleaner can result in damage to the pool finish or the vinyl liner, Fluidra Waterlinx Pool and Spa disclaims any liability for repairs or replacement to any of these structures or components of the customer's pool.

Fluidra Waterlinx Pool & Spa. All rights reserved.
This document is subject to change without notice.



IMPORTANT WARNINGS AND SAFETY INFORMATION

How to safely operate the SPLASHER Automatic Pool Cleaner

-  **Attention Installer:** This guide contains important information about the installation, operation and safe use of this product. This information should be given to the owner and/or operator of this equipment after installation of the pool cleaner.
-  **Attention User:** This manual contains important information that will help you in operating and maintaining this pool cleaner. Please retain it for future reference. Consult with any questions regarding this equipment.
-  **Important Notice:** Before installing this product, read and follow all warning notices and instructions which are included. Failure to follow safety warnings and instructions can result in severe injury, death, or property damage.
-  **Information and Safety:** This pool cleaner is designed and manufactured to provide many years of safe and reliable service when installed, operated and maintained according to the information in this manual. Be sure to read and comply with all of the warnings and cautions contained in this manual.
-  **HAZARDOUS SUCTION:** Do not play with cleaner or hose or apply to body. Can trap and tear hair or body parts. Hose can trip or entangle swimmers which could result in drowning.
-  **SUCTION ENTRAPMENT, INJURY, AND DROWNING HAZARD:** If your pool has a dedicated suction port ("vac port") for vacuuming or for an automatic pool cleaner, this must be covered when not in use. Install a spring loaded safety cover on the suction port to prevent entrapment and injury.
-  To reduce the risk of injury, do not let children use or play with pool cleaner.
-  Do not allow swimmers in the pool while pool cleaner is operating. Hose can trip or entangle swimmers which could result in drowning.
-  Moving parts may injure hands or fingers. Stop pump before attempting to clean out pool cleaner head.



WARNING!

DO NOT DETACH THE CLEANER FROM THE HOSE WHILE THE PUMP IS ON.
 Risk of suction entrapment hazard, which, if not avoided can result in serious injury or death.
 Read this manual in its entirety before installing and operating the cleaner.



GENERAL INSTALLATION CHECKS

Pre-Installation Check List

Before installing your SPLASHER, review and understand all warnings and safety information in this manual. Failure to follow these instructions or improper installation of the cleaner can result in damage to the pool finish or the vinyl liner, Fluidra Waterlinx Pool and Spa disclaims any liability for repairs or replacement to any of these structures or components of the customer's pool.

Before installing the cleaner in a vinyl liner pool: Check liner closely for signs of deterioration or damage from age, chemicals, pool wall damage, etc. If any damage is found, have a qualified pool professional make all the necessary repairs. Also, if there are stones, roots, etc, under the liner, remove them before installing the cleaner. Certain vinyl liner patterns are particularly susceptible to surface wear, pattern removal, ink rubbing off of, or serious scratches to the pattern caused by objects coming into contact with the vinyl surface, including automatic pool cleaners. Fluidra Waterlinx Pool & Spa is not responsible for any pattern removal, abrasions or markings on vinyl liners.

Before installing the cleaner in a gunite pool or a pool that is partially or completely tiled: Before installing the pool cleaner in a gunite (concrete) pool or pool that is partially or completely tiled, check closely for loose tiles and loose light fittings. Do not install the pool cleaner before having a qualified professional perform the necessary repairs.

Before installing the cleaner, clean your filter system: Make sure you have cleaned the filter, including backwashing, rinsing, and emptying all baskets. A clean system is necessary for proper cleaner operation and coverage.

Before installing the cleaner, understand cleaner coverage: The cleaner is designed to rid your pool of debris in approximately 4-6 hours. Less time could be needed, depending on the pool size. The cleaner was not designed to automatically clean steps or swim-outs or to work under a solar cover.

Post- installation Check List

AFTER installing your SPLASHER, make sure the cleaner is operating correctly: The cleaner may need some minor adjustments to make sure it is operating properly so there is no damage to the pool finish.



OPERATING AND INSTALLATION INSTRUCTIONS

Preparation for installation (Pool preparation)

Method for cleaning pools and pumps

Before assembling and installing your SPLASHER Automatic Pool Cleaner, your pool should be clean and algae-free so as not to inhibit the cleaner's traction. If necessary, make the following preparations before proceeding:

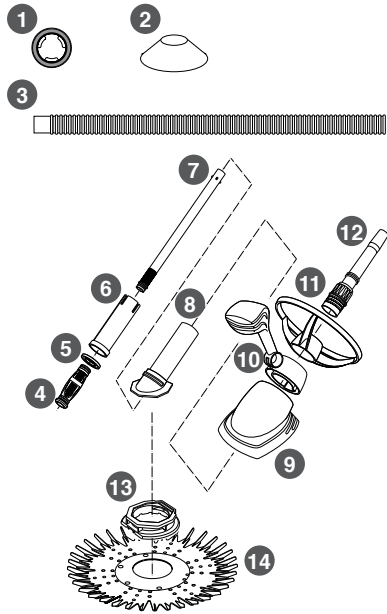
- Chemically balance the pool water.
- Brush pool and let the debris settle.
- Manually vacuum thoroughly.
- Remove, clean and replace the weir and pump strainer baskets.
- Ensure your filtration system's multiport valve is working properly.
- Thoroughly clean and backwash the filter.

Ideal water conditions for the SPLASHER are:

	Fibre glass pools	Marbelite pools
Total alkalinity	120ppm-150ppm	80ppm-120ppm
pH levels	7.0 - 7.2	7.2 - 7.6
Chlorine	1.0 - 1.5ppm	1.0 - 1.5ppm

Features and benefits of your SPLASHER

SPLASHER Components and Spare Parts diagram



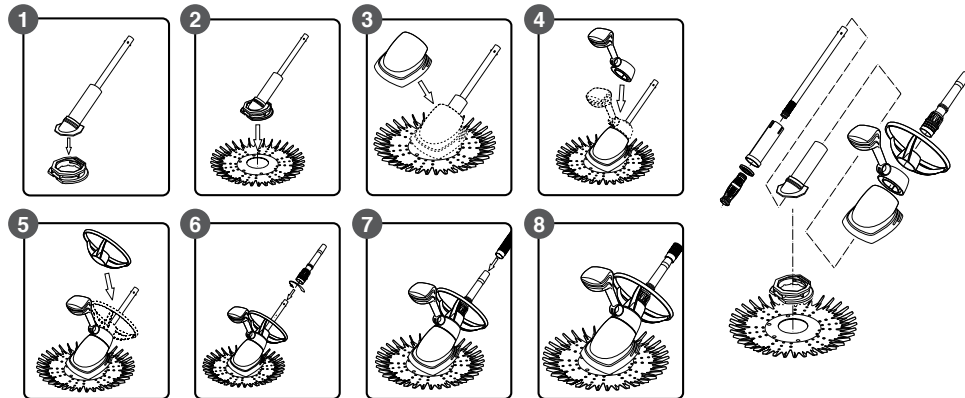
No	Code	Description
1	630-9080	Hose Weight
2	570-0007	Easy Out Jogger
3	630-6210	1m Unifit Hose
4	630-9068	Diaphragm Round
5	630-9069	Inlet Plate
6	630-9079	Cartridge
7	630-9067	Inner Tube
8	630-9083	Main Body
9	630-9073	Shroud
10	630-9078	Float Set
11	630-9072	Deflector Wheel
12	630-9085	Outer Tube
13	630-9070	Flexi Foot
14	630-9071	Finned Disc

Include universal adaptor.

EASY OUT JOGGER CONE:

Place Easy Out Jogger between 2nd and 3rd hose length, small side facing the weir and the bigger side facing the cleaner. The Easy Out Jogger Cone will sit/lie on top of the water

SPLASHER Assembly



1. Fit the flexi foot to the cleaner main body, ensuring the main body lower flange is properly secured into the flexi foot locating groove (picture 1)
2. Place the inner top of the finned disc onto the flexi foot pad flange and peel over until the disc is secure between the flange and top of the flexi foot pad. The fins of the disc and the word "TOP" should face the cleaner main body. (picture 2)
3. Place the cleaner shroud (Silver) over the inner tube and slide down onto the main body. The main body has a location key that needs to align with a groove within the shroud. This ensures the shroud is installed correctly. (picture 3)
4. Place the cleaner float assembly over the inner tube and on top of the shroud. This also needs to be aligned to the main body location key. (picture 4)

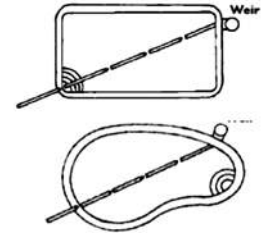
5. Slide the cleaner deflector wheel over the inner tube until located on top of the float assembly. The deflector wheel does not align with the locating key on the main body and is able to spin freely on the top section of the main body. (picture 5) NOTE: The deflector ring can be removed and replaced with a SPLASHER cone to enhance performance, depending on pool shape
6. Slide the outer tube assembly down the inner tube and screw the nut into place as this will secure the deflector wheel. (picture 6)
7. Connect sufficient lengths of cleaner hose to cover the distance from the pool skimmer box or weir to the furthest point of your pool, plus one length. (picture 7)
8. Congratulations your SPLASHER pool cleaner is ready for installation into your pool!

Hose assembly:

⚠ The pump must be on when you check the hose length. The hose contracts when the pump is operating and will be longer when the pump is off.

While the cleaner is operating:

1. Position cleaner at the furthest point of the pool from where it's attached. (Use a pool pole and brush to easily position the cleaner in the pool.)
2. The hose should be long enough to reach the end of the pool, plus one hose section. (The hoses are universal hoses and fit directly into each other.)
3. If there is excess hose, be sure to remove the sections from the center portion of hose. This avoids disturbing the hose weight placement.
4. Save extra hose sections for use as needed for replacement. Always keep extra hoses stored in a straight position.



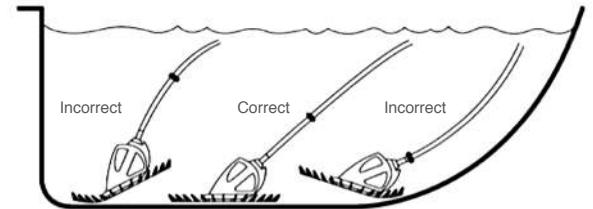
⚠ Note: Turn pool pump off when adding or removing hose sections.

Attaching hose weights

To determine correct hose balance, turn the pump off and note the cleaner's position in the pool. Correct Hose Balance: Cleaner seal sits flat on the pool floor and the drive tube makes 45° angle with the pool floor.

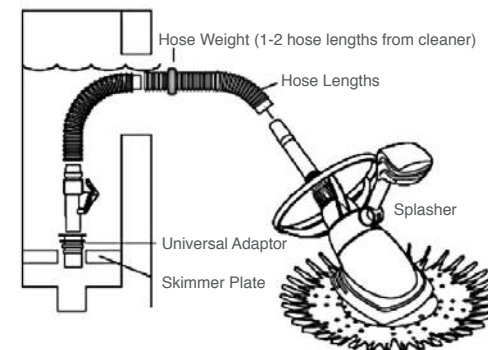
For maximum cleaning coverage, the hose does not pull up or down on the unit. Adjust hose weight one inch at a time, as needed, to achieve proper hose balance.

In pools with both shallow and deep areas, adjust hose weights first in the deep area and then in the shallow area.



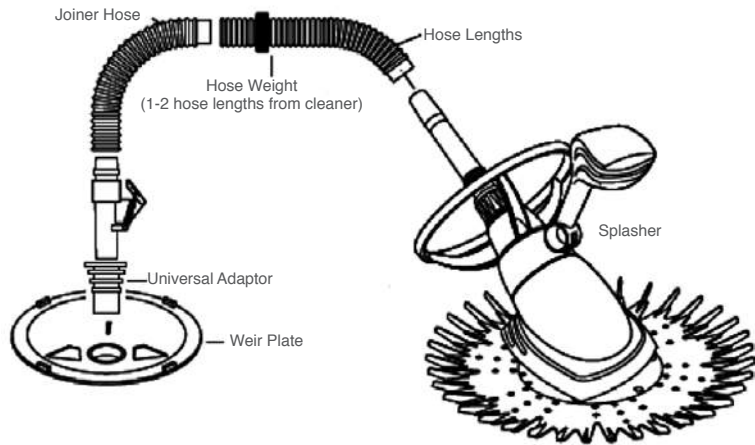
Installation

Weir installation



SPLASHER fitment and positioning

1. Connect the SPLASHER to your hoses
2. Gently place the SPLASHER in the water.
3. To enable air to be driven from the unit, place the last pipe on your inlet while your pool pump is running.
This will fill the unit with water and allow it to sink to the pool floor.
4. Attach the flow control valve to the weir, with the arrow in the direction of the water flow.
5. Attach the free end of the pool hose to the free end of the flow control valve.
6. Switch on the pool pump and the SPLASHER will start to operate.



1. Place the diaphragm inlet plate over the correct end of the SPLASHER diaphragm. Ensure the ring is properly secured into the locating grooves of the diaphragm. The flat side of the inlet plate must show up, the rib side must show to the bottom as in picture 1.
2. Insert the cleaner's inner tube into the diaphragm on the end opposite the inlet plate. (picture 2)
3. Place the cartridge over the top of the inner tube with the larger opening to the diaphragm and inlet plate. Slide the cartridge down over the inner tube and ensure the inlet plate is properly secured into the cartridge. Note: Ensure the diaphragm is not twisted once installed into the cartridge (picture 3)
4. Insert the diaphragm, inlet plate and inner tube assembly into the main body and ensure the diaphragm cartridge is pushed fully into the main body. The diaphragm is assembled ready for the remaining SPLASHER components to be assembled.

Routine Maintenance

Debris- Keep your skimmer basket, pump strainer basket, skim filter, sand filter, cartridge filter (as applicable) free of debris. To ensure maximum suction and cleaner efficiency, backwash your filter at regular intervals. Remember that the SPLASHER is driven by water flow and that a dirty filter will reduce the water flow through the SPLASHER and will affect the SPLASHER's operation. If the filter is clean and the water flow paths to and from the filter are clear, your water flow rate could be too high and the flow control valve should be adjusted to reduce the water flow rate to achieve good pool sweeper action.

Cleaning- Keep your SPLASHER clean and free of algae by washing with a mild detergent. Do not expose SPLASHER to harsh chemicals.

Wear and tear- Ensure that the SPLASHER's disc, foot pad, deflector wheel and diaphragm are in good condition. As the disc wears, it will become shiny and very smooth. Under extreme wear conditions the disc will also start to warp and tear. The disc should then be replaced. The foot pad will also become shiny and very smooth which will reduce its ability to adhere to the pool surface. The foot pad should then be replaced. The deflector wheel will wear as it comes into contact with pool edges, such as the walls or steps. Wearing is likely to occur in specific spots. The diaphragm should be inspected regularly and when stretched or torn must be replaced.

Hoses- Your hoses should be flexible and straight. If your hoses have become brittle they should be replaced and, if not straight, place them in straight positions in the direct sun light for a few hours. Your hoses should be without leaks and should always be securely connected. They may rub against the wall and if so, a hose protector may be used.

Chemical use and your SPLASHER- The harsh effects of chemicals in pool water could affect the colouring of your SPLASHER. This will however not affect the performance and cleaning ability of the SPLASHER. In order to minimize damage and discolouration, it is recommended that your pool is kept at the correct alkalinity and pH (please see below). The SPLASHER should also be removed from the pool for a minimum of 4 hours when 'shock' treatment is employed.

Ideal water conditions for the SPLASHER are:

	Fibre glass pools	Marbelite pools
Total alkalinity	120ppm-150ppm	80ppm-120ppm
pH levels	7.0 - 7.2	7.2 - 7.6
Chlorine	1.0 - 1.5ppm	1.0 - 1.5ppm

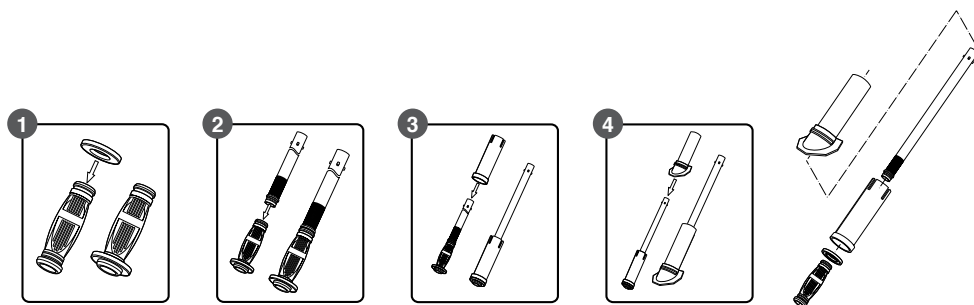
Tips

- Backwash and rinse filter and clear weir and pump basket before operating your new SPLASHER pool cleaner.
- Backwashing and cleaning the weir and pump baskets should be done weekly.
- When replacing the diaphragm or any part of your SPLASHER it is advised that you let your local pool dealer replace it for you. This is due to the complexity of the replacement.
- Do not leave the SPLASHER or hoses in direct sunlight for extended periods when out of the water.



MAINTENANCE

Diaphragm Assembly





TROUBLESHOOTING

PROBLEM	SOLUTION
<ul style="list-style-type: none"> • SPLASHER does not move • SPLASHER moves very slowly 	<p>Has the filter been backwashed recently? Ensure that your pool's filtration system is operating in accordance with the manufacturer's instructions and provides sufficient suction.</p> <p>Check all baskets for debris (pump and weir baskets).</p> <p>Check that the diaphragm is clear of all debris.</p> <p>Check the SPLASHER diaphragm for wear and tear, and if worn, replace the diaphragm.</p> <p>Ensure there are no leaks in the hoses by lifting hoses out of water. Air bubbles noticeable at the return line also indicate a suction leak.</p> <p>Check the outer tube / outer extension pipe for excessive clearance +- 2mm. Excessive clearance will cause the SPLASHER to have running/stopping problems.</p> <p>Is the sand in the filter older than +- 3 years? Filter cartridge may need to be changed or cleaned. To check this put the filter on 'bypass'. If the SPLASHER works while filter is on bypass consider changing the sand.</p> <p>Is the vacuum lid sitting flush in the weir? Replace vacuum lid if damaged.</p>
<ul style="list-style-type: none"> • Suction 	<p>Check that there is sufficient suction in your pool's filtration system and that it is operating in accordance with the manufacturer's instructions. If necessary, backwash the filter to improve the water flow and increase the suction.</p> <p>If there is strong suction, ensure that your flow control valve is functioning correctly. The flow control valve should be adjusted if necessary so that there is strong water flow through the flow control valve, and reduce bypass flow.</p> <p>Ensure there are no leaks in the hoses, and that they are connected properly.</p>
<ul style="list-style-type: none"> • SPLASHER moves a short distance then stops 	<p>Refer to the solutions listed for 'SPLASHER does not move'.</p> <p>Outer tube or outer extension pipe extension pipe might be worn out.</p> <p>Pump suction may be too strong and cause unit to stick to the floor. To rectify this adjust the flow through the SPLASHER by adjusting the flow control valve so that the gate opens more easily to bypass water. Normal setting is between 2 and 4.</p>
<ul style="list-style-type: none"> • SPLASHER falls on its side 	<p>Check if the float is filled with water.</p> <p>Check that the outer extension pipe can rotate freely.</p>

PROBLEM	SOLUTION
<ul style="list-style-type: none"> • SPLASHER gets stuck in a particular place 	<p>Adjust the hose length by either adding or removing a hose.</p> <p>Ensure that the aimflow nozzle is not interfering with the movement of the SPLASHER. If so, adjust the aimflow nozzle to direct the flow away from the unit.</p> <p>If the problem persists, attach The Easy-Out Jogger on the first hose and insert an aimflow diverter ball in the aimflow nozzle.</p> <p>NOTE: The Easy-Out Jogger helps to get your SPLASHER out of difficult corners. It can be fitted between the 2nd and 3rd hose length, small side facing the weir and the bigger side facing the cleaner. The Easy-out Jogger cone will float on top of the water.</p>
<ul style="list-style-type: none"> • SPLASHER does not sink 	<p>Ensure there is no air trapped in the hoses or unit.</p> <p>Ensure that the SPLASHER has its weight in the unit.</p>
<ul style="list-style-type: none"> • SPLASHER does not climb wall 	<p>Ensure that the baskets and cleaner are free of debris so that there is maximum water flow and backwash the filter.</p> <p>Ensure adequate suction. Adjust the flow control valve settings to a higher setting. This increases the suction flow through the pool pump.</p> <p>Sand or filter cartridge may need to be changed or backwashed.</p> <p>Is the Disc curling at the edges? The Disc needs replacing.</p> <p>Is the pool radius sufficient for the SPLASHER to climb the walls? The recommended radius is at least 300mm.</p> <p>Check the float chamber for buoyancy, no water should be present in the chamber.</p> <p>Is the outer tube or outer extension pipe excessively worn (in excess of 2mm play)? Replace if necessary.</p>
<ul style="list-style-type: none"> • SPLASHER climbs out of the water 	<p>Ensure that the flow control valve is working and free of debris.</p> <p>Lower the setting on the flow control valve to reduce water flow through the flow control valve and increase the bypass flow.</p>
<ul style="list-style-type: none"> • SPLASHER is sticking on pool light 	<p>Ensure that pool light is not protruding from the pool wall surface (i.e. is flush with pool wall surface). If necessary, remove lens of pool light and reinstall correctly. Alternatively, utilise an Easy-Out Jogger Cone.</p>



TROUBLESHOOTING

PROBLEM	SOLUTION
• SPLASHER is sticking on pool stairs	Adjust your pool's return flow / aimflow towards the problem area to guide the cleaner away from the steps. Verify proper hose length and correct position of the Hose Weight(s). Remove or add one hose section. Using your flow control valve, increase or decrease the flow to your SPLASHER within the maximum/minimum range.
• SPLASHER is moving in a set pattern	Ensure correct hose length. Change the hose length by adding or removing sections of the hose. Ensure that the hoses are in good condition. The hose should not be coiled or bent. Always store hoses in straight position.
• Diaphragm Assembly	For instructions on how to change your SPLASHER diaphragm, please see the Maintenance section.



WARRANTY INFORMATION

SPLASHER 2 year Warranty**(Attach sales receipt as proof of purchase date)**

Your new SPLASHER was carefully checked before shipment. Upon unpacking, if any parts are missing or found to be defective notify your dealer immediately. Please consult owner's manual for instructions on the installation and operation of this product. The Manufacturer warrants this SPLASHER to be free from defects in materials and workmanship for a period of two (2) years from proven date of purchase. If your SPLASHER has a defective part, please take the pool cleaner to the store where purchased to have it repaired.

Warranty exclusions**This warranty excludes the following:**

1. Discolouration of the SPLASHER is caused by reaction to chemicals used in the pool water. Discolouration does not affect the operational ability of the SPLASHER. Therefore this warranty does not cover the replacement of discoloured parts.
2. Damage to, or malfunction of the unit resulting from excess chlorinating or improper water chemistry balance.
3. Replacement of parts that fail or become defective as a result of improper installation, negligence, misuse, abuse or tampering by unauthorised repair personnel.
4. Age, pool water imbalance and improper installation can cause pool liners to become brittle or unduly wrinkled. Corrosion of the supporting walls and/or irregularities in the pool base may also cause liner failure. The use of this product in such an environment is at the pool owner's risk. Therefore the pool owner hereby releases any and all claims for damage where these conditions exist.
5. Abrasion to the hose or damage caused by misuse or improper installation.
6. All wearing parts must be regularly checked and replaced when worn. These include the foot pad, disc and bumper wheel.
7. All newly installed pools must be properly cured before a cleaner is used. Use of a cleaner can only take place once the pool has cured.
8. A cleaner must be properly installed and its performance must be monitored to ensure no undue wear and tear on product or pool occurs.
9. The Diaphragm is a wearing part which could be damaged by debris picked up from the pool floor, under these circumstances it will NOT be covered by the manufacturer's warranty.

Note: Most problems are caused by poor installation, poor water chemistry, wear and tear, twigs or debris blocking the Diaphragm or low suction from a dirty filter. No claim under this warranty will be recognized unless the attached registration card is completed and returned within fourteen (14) days of the day of purchase. Only the original purchaser may claim under his warranty and SALES RECEIPT or PROOF OF PURCHASE DATE is required. Purchaser's claims shall be limited to manufacturing defects only.



WARRANTY INFORMATION

Warranty Terms and Conditions

Conditions & exclusions

1. This warranty is for the replacement of defective parts only and does not cover labour charges including, but not limited to, charges incurred for installation of replacement parts or additional fees that may be imposed by the dealer or servicing agent.
2. This warranty against wear does not include replacement of parts that become discoloured due to exposure to sunlight or chemicals, or parts which, even if worn, do not affect performance of the cleaner. Nicks, scratches, fading, discoloration, etc. are cosmetic conditions that do not necessarily affect mechanical performance. Both manufacturer and dealer reserve the right to deny any and all warranty claims made for worn parts if manufacturer/dealer determines that the wear does not negatively affect mechanical performance of the cleaner.
3. The cleaner is designed to function in a properly designed, constructed and maintained pool. This warranty does not extend in the circumstances where the pool's design, construction or maintenance is defective or sub-standard.
4. Deterioration, discoloration or brittleness of pool plaster and vinyl liners can be caused by age, improper pool chemistry, improper installation, or other factors. Customer hereby disclaims any and all claims, and releases the manufacturer from any and all claims for damages to any pool plaster or vinyl liner in the customer's pool by reason of the use and / or operation of the cleaner. Customer represents and agrees that claims which it may assert against manufacturer shall be limited to those which may be asserted under the foregoing limited warranty.
5. The cleaner is designed for the use on in-ground pools only and its warranty is limited to this use. If cleaner is used in any other application, customer understands that this is a misuse of the product and will void all warranty of the cleaner. Further, customer hereby releases manufacturer from any and all claims stemming from the misuse of the cleaner.
6. Under no circumstances shall manufacturer be liable for any loss or damage, whether direct, consequential or incidental, arising out of the use or inability to use the cleaner in customer's pool.
7. The limited warranty does not apply to injury, loss, damage, defect or malfunction of the cleaner or failure to function resulting from any failure to operate or maintain the cleaner in accordance with the directions contained in the instruction and operation manual or operating instructions provided by Fluidra Waterlinx Pool & Spa; or any injury, loss, damage, defect or malfunction or failure to function resulting from any accident, acts of God, alterations in the cleaner by anyone other than manufacturer including but not limited to such damages or injuries to parts resulting from improper installation or damage to pump parts resulting from running the pump dry (e.g., interruption in or inadequate supply of water to pump parts due to loss of prime or obstruction in line or otherwise); or damage, defect or malfunction resulting from defects in, failure or malfunction of, or negligence, abuse, or misuse with respect to equipment other than the cleaner; or any damage or loss of any nature what so ever and personal injury caused due to the presence of a foreign object in or about the pool.
8. The limited warranty is valid and enforceable only on cleaners made by Fluidra Waterlinx Pool & Spa.
9. This limited warranty is applicable only if the cleaner is purchased from a Fluidra Waterlinx Pool & Spa dealer.
10. This warranty shall apply only to customer as an original purchaser of the cleaner from a Fluidra Waterlinx Pool & Spa dealer and shall not apply to any subsequent purchaser, assignee or other recipients of the cleaner from customer.

11. No dealer, distributor or other similar person has any authority to make any warranties or representations concerning SPLASHER, or to extend this warranty beyond the express terms contained herein. Manufacturer assumes no responsibility for any warranties beyond the express terms contained in this warranty.
12. This limited warranty does not apply unless the Registration Card is signed, completed and returned within fourteen (14) days from the date of purchase. The manufacturer reserves the right to dispose of Registration Card once it is received.
13. These warranties set forth herein are in lieu of any other warranties, expressed or implied, including the warranties of merchantability or fitness. Any such implied warranty imposed by state consumer law is limited in duration to two (2) year from the date of purchase.
14. Customer represents and agrees that any claims with it may assert against the manufacturer shall be limited to those which may be asserted under the foregoing warranty.



WARRANTY CARD

To obtain a warranty replacement or repair, please contact the dealer purchased from, or post to:

ASTRALPOOL
Avda. Francesc Macià, 38, planta 16
08208 Sabadell (Barcelona) Spain
info@astralpool.com
www.astralpool.com

When submitting a claim always supply evidence of purchase date, retailer and a brief description of the defect encountered. We reserve the right to repair or replace all defective parts covered by this warranty and return same to purchaser. The manufacturer and /distributor assume no responsibility for any warranties or representations made by others.

FLUIDRA
POOL &
WELLNESS 

 **AQUA**
link