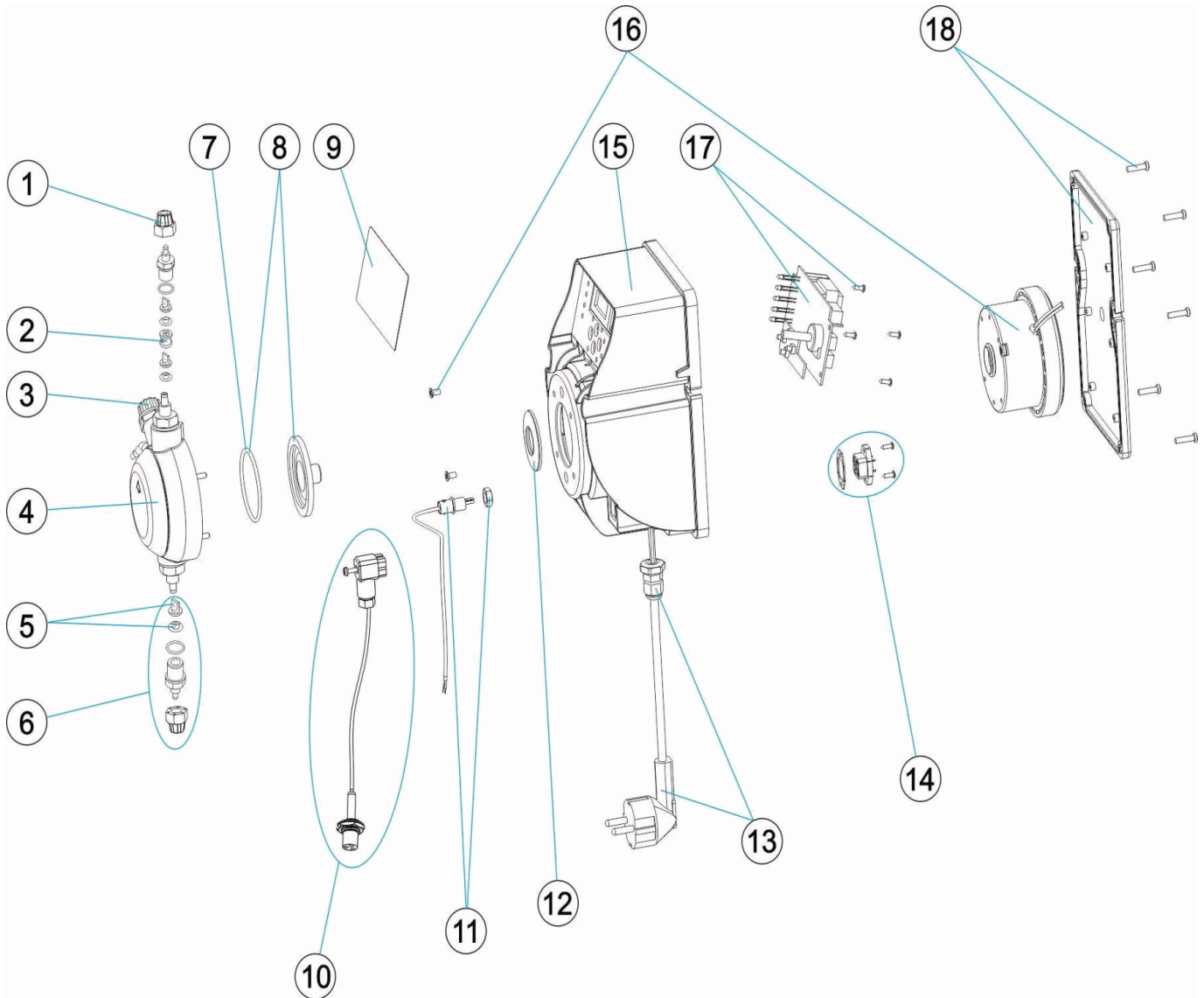


CODE **65979, 65980, 65981**

 DESCRIPTION: **COMBI PH/REDOX CLASS DOSING PUMP**

ENGLISH

POS	CODE	DESCRIPTION	POS	CODE	DESCRIPTION
1	CE08030126	SUCTION TUBE NUT	10	CE08030062	LEVEL PROBE MA/MB
2	CE08033111	DISTANCIALE FOR BLEEDING	11	CE08032603	FEMALE CONNECTOR BCN EXACTUS 2009
3	CE08032308	DRAIN PLUG	12	* CE08030531	PISTON WASHER 5L 7KG
4	CE08033102	COMPLETE HEAD ASSEMBLY5-10 L.	12	* CE08030037	PISTON WASHER 10L 5KG
5	CE08030116	VITON VALVE + SUPPORT	13	CE08033110	SUPPLY CABLE
5	CE08030117	SILICON VALVE + SUPPORT	14	CE08030063	MALE CONNECTOR
5	CE08030115	DUTRAL VALVE + SUPPORT	15	CE08030064	PUMP BOX CLASS
6	CE08030113	HEAD CONNECTOR BODY + VITON	16	* CE08030921	ELECTROMAGNET 2 L. 5KG
6	CE08030114	HEAD CONNECTOR BODY + SILICON	16	* CE08030118	ELECTROMAGNET ASSEMBLY COMPLETED 5L 7K
6	CE08030112	HEAD CONNECTOR BODY + DUTRAL	16	* CE08030517	ELECTROMAGNET 10L 5KG
7	CE08030111	HEAD O RING	17	CE08032602	ELECTRONIC CIRCUIT PH/RX 2009
8	CE08030119	DIAPHRAM COMPLETE	18	CE08030067	PUMP REAR COVER
9	CE08030060	CONTROL FACEPLATE			

* -> SEE OBSERVATIONS SHEET

CODE **65979, 65980, 65981**DESCRIPTION: **COMBI PH/REDOX CLASS DOSING PUMP****OBSERVATIONS**

POS	CODE	OBSERVATIONS
12	CE08030531	FOR: 65979, 65980
12	CE08030037	FOR: 65981
16	CE08030921	FOR: 65979
16	CE08030118	FOR: 65980
16	CE08030517	FOR: 65981